

## AR HIGH PRECISION CHIP RESISTORS



### GENERAL SPECIFICATIONS

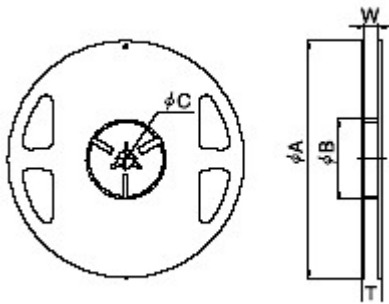
Model	Power Rating [W]	Working Voltage Max. [V]	Overload voltage Max.[V]	Resistance Tolerance [%]	Resistance Range [ Ω ]	TCR [PPM/C]
AR02(0402)	1/16	25	50	+ -0.10 + -0.25 + -0.50	10 - 200K	+ -25 + -50
AR03(0603)	1/16	50	100	+ -0.05	4.7 - 150K	
				+ -0.10 + -0.25 + -0.50	4.7 - 800K	
				+ -0.25 + -0.50	2 - 4.6	
AR05(0805)	1/10	100	200	+ -0.05	4.7 - 500K	
				+ -0.10 + -0.25 + -0.50	4.7 - 2M	
				+ -0.25 + -0.50	1 - 4.6	
AR06(1206)	1/8	150	300	+ -0.05 + -0.10 + -0.25 + -0.50	4.7 - 1M	
AR10(2010)	1/4			+ -0.25 + -0.50	1 - 4.6	
AR12(2512)	1/2			1M - 2M		

### CHARACTERISTICS

Values in [ ] mean change in ohmic value after test

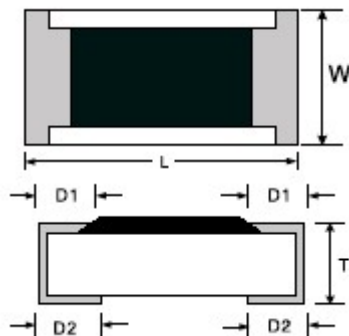
Operating Temp. Range	-55 C to +125 C
Thermal Shock	±[0.25%+0.05Ω]MIL-STD-202, Method 107 : -55 C ~ +125 C .100 cycles
Short Time Overload	±[0.5%+0.05Ω]JIS-C-5202-5.5 :RCWV X 2.5 or Max Overloading Voltage, 5sec.
Load Life	±[0.5%+0.05Ω] MIL-STD-202F Method 108A : RCWV,70 C ,1.5hrs. OFF for 1000 ~ 1048 hrs.
Resistance to Soldering Heat	±[ 0.5%+0.05Ω]MIL-STD-202F Method 320E:260 ± 5 C , for 10 ± 1 sec .
Humidity (Steady State)	±[0.5%+0.05Ω] MIL-STD-202F, Method 103B: 40 C ,90~95% RH,RCWV.1.5hrs. ON, 0.5hrs. OFF.
Low Temperature Operation	±[ 0.5%+0.05Ω]JIS-C5202-7.1:1hrs.-65 C ,followed by 45 minutes of RCWV.
Temp. Coefficient of Resistance	±[25,50ppm]MIL-STD-202F, Method 304: +25/-55/+25/+125+/25 C

## REEL SPECIFICATIONS



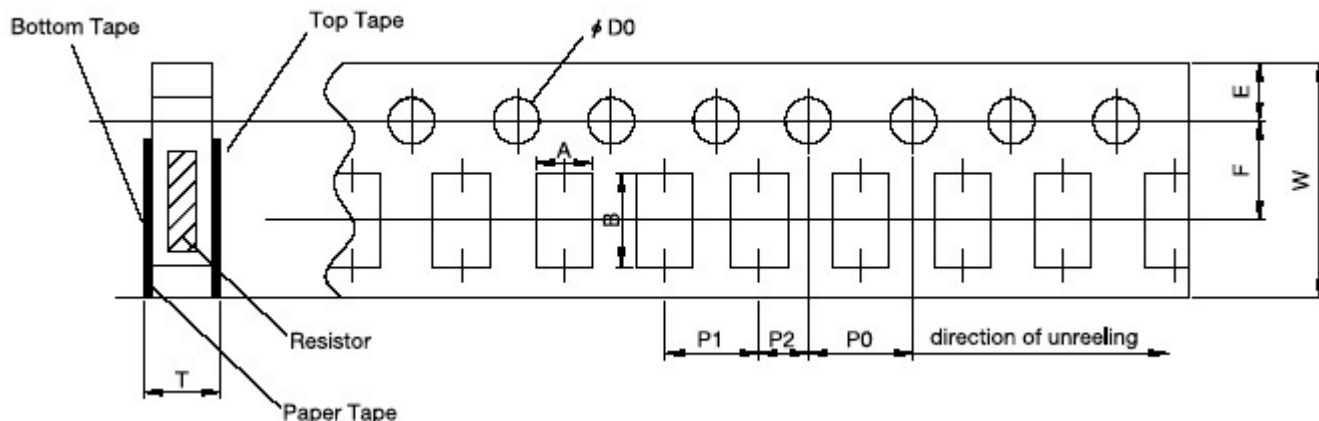
Model	Dimension [mm]					Paper Tape	Embossed Plastic Tape
	A	B	C	W	T		
AR02	180 +0-3	60 +1+0	13.0 $\pm 1.0$	9.00 $\pm 0.50$	11.40 $\pm 1.00$	10,000	
AR03						5,000	
AR05						5,000	
AR06						5,000	
AR10							4,000
AR12							4,000

## DIMENSIONS



Model	Dimension [mm]				
	L	W	T	D1	D2
AR02	$1.00 \pm 0.05$	$0.50 \pm 0.05$	$0.30 \pm 0.05$	$0.25 \pm 0.10$	$0.20 \pm 0.10$
AR03	$1.60 \pm 0.10$	$0.80 \pm 0.10$	$0.45 \pm 0.10$	$0.30 \pm 0.20$	$0.30 \pm 0.20$
AR05	$2.00 \pm 0.15$	$1.25 \pm 0.15$	$0.50 \pm 0.10$	$0.30 \pm 0.20$	$0.30 \pm 0.20$
AR06	$3.00 \pm 0.10$	$1.50 \pm 0.10$	$0.55 \pm 0.10$	$0.45 \pm 0.20$	$0.40 \pm 0.20$
AR10	$4.90 \pm 0.15$	$2.40 \pm 0.15$	$0.60 \pm 0.10$	$0.60 \pm 0.30$	$0.50 \pm 0.25$
AR12	$6.30 \pm 0.15$	$3.10 \pm 0.15$	$0.60 \pm 0.10$	$0.60 \pm 0.30$	$0.50 \pm 0.25$

## PAPER TAPE SPECIFICATIONS



Model	Dimension [mm]									
	A	B	W	F	E	P1	P2	P0	D0	T1
AR02	0.62 ± 0.05	1.12 ± 0.05	8.0 ± 0.2	3.50 ± 0.05	1.75 ± 0.01	2.00 ± 0.02	2.00 ± 0.05	4.00 ± 0.05	1.55 ± 0.05	0.50 ± 0.10
AR03	1.10 ± 0.10	1.90 ± 0.10				4.00 ± 0.01				0.80 ± 0.10
AR05	1.60 ± 0.15	2.40 ± 0.20				4.00 ± 0.01				4.00 ± 0.01
AR06	2.00 ± 0.15	3.60 ± 0.20				4.00 ± 0.01				0.80 ± 0.10
AR10	2.80 ± 0.20	5.30 ± 0.20	12.00 ± 0.10	5.50 ± 0.05	1.75 ± 0.05	4.00 ± 0.05	2.00 ± 0.05	4.00 ± 0.05	1.55 ± 0.05	1.00 ± 0.20
AR12	3.50 ± 0.20	6.80 ± 0.20								

## ORDERING PROCEDURE EXAMPLE

