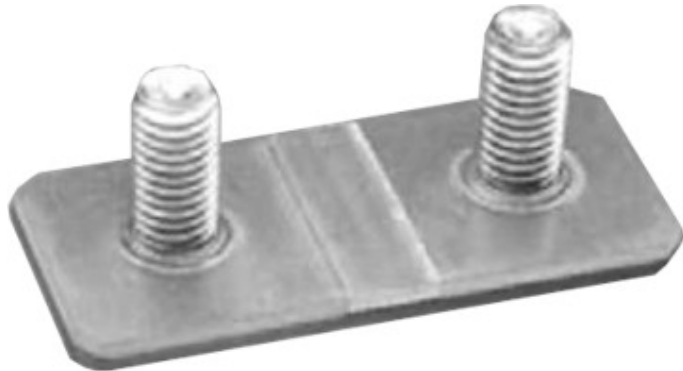


BVM-F CURRENT APPLICATION PRECISION SHUNTS



These components have excellent long term stability and can handle continuous current of up to 200A (0.1mR). These units have a low inductance, heavy copper terminals and 5W continuous power. Easily mounted using reflow soldering, welding on copper or bolted onto cables or bus bars. Maximum soldering temperatures of 350C/30sec. or 250C/10min. Applications include: KWh meters, energy metering, battery current sensing, high current automotive circuits and high current measurement in welding machines.

SPECIFICATIONS

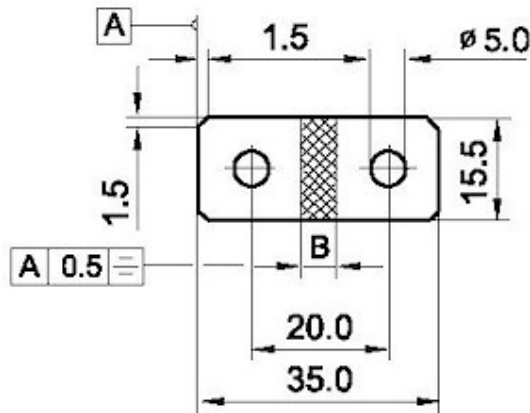
| Model | Wattage Rating | Resistance [ohms] | Tolerance | TCR |
|-------|----------------|-------------------|-----------|-----------------|
| PMS | 5W | 0.1m, 0.2m, 0.3m* | + -5% | <20ppm/(20-60C) |

CHARACTERISTICS

Values in [] mean change in ohmic value after test

| | |
|--------------------------|-------------------------------------|
| Temperature Range | -55C-140C |
| Internal Heat Resistance | <10K/W |
| Inductance | <1nH |
| Load Life (nominal load) | Deviation <0.5% after 2000hrs. @80C |

DIMENSIONS BVM-F [mm] Version A

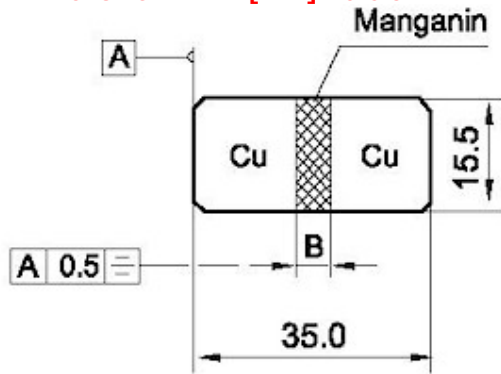


| R | B |
|-------|-------------------------|
| 0.1mΩ | 5.0 ^{±0.3} mm |
| 0.2mΩ | 10.0 ^{±0.3} mm |

t = 1.0 bis 1.5 mm

Z-YF-051c

DIMENSIONS BVM-F [mm] Version B

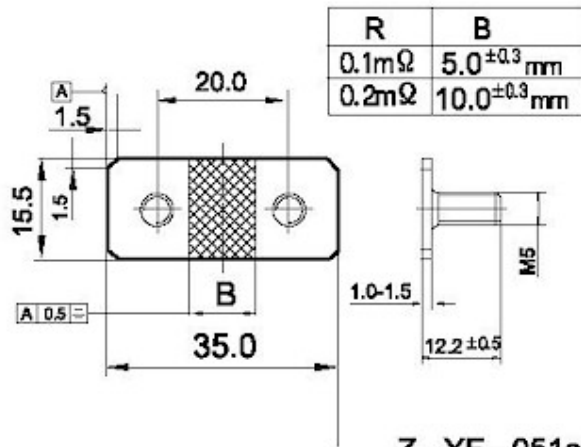


t = 1.0 bis 1.5 mm

| R | B |
|-------|-------------------------|
| 0.1mΩ | 5.0 ^{±0.3} mm |
| 0.2mΩ | 10.0 ^{±0.3} mm |

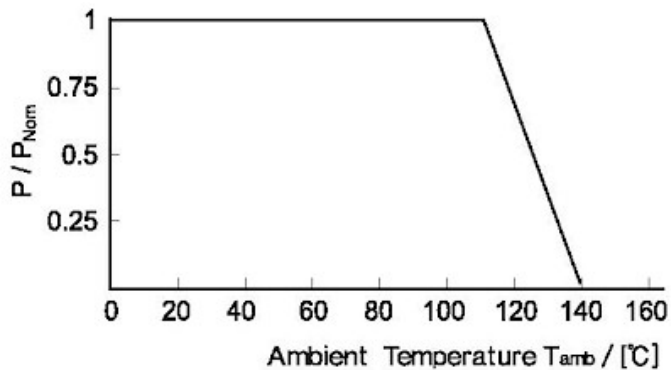
Z-YF-051c

DIMENSIONS BVM-F [mm] Version D

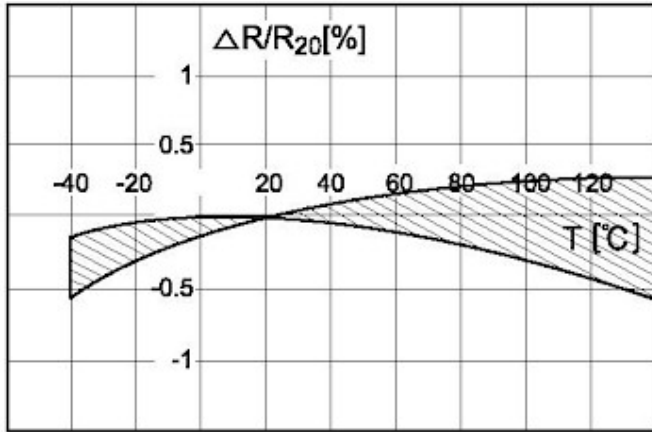


Z-YF-051c

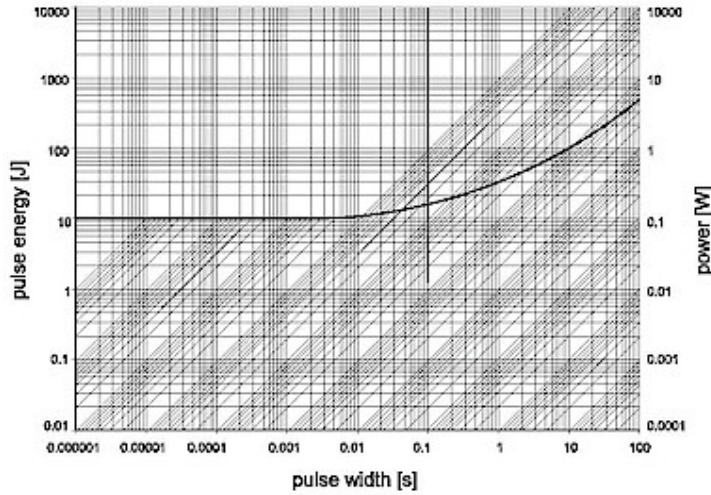
DERATING CURVE



POWER DEPENDENCE



PULSE ENERGY



ORDERING PROCEDURE EXAMPLE

