

BWT E-BEAM WELDED, THROUGH HOLE, PRECISION SHUNTS



These space saving components feature E-Beam welded construction and full RoHS compliancy. Available in 2-terminal or 4-terminal Kelvin connections. Other features include a 55 ampere continuous operating current and an inductance of less than 10nH.

SPECIFICATIONS

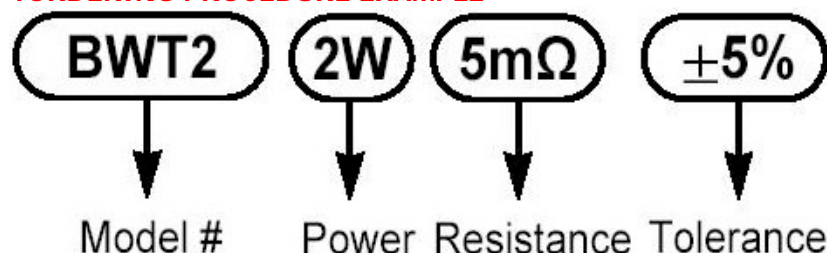
Model	Power Rating	Resistance [ohms]	Tolerance
BWT-2	2W	0.003-0.020	+-1%, +-5%
BWT-4	5W	0.0005-0.010	

CHARACTERISTICS

Values in [] mean change in ohmic value after test

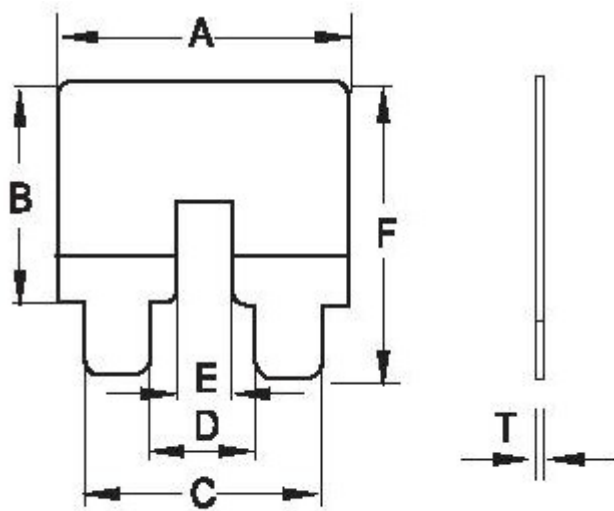
Test	BWT 2	BWT4
Temperature Coefficient (-55C to 125C)	[<50PPM/C]	[<50PPM/C]
Moisture Resistance	[<0.5%]	[<1.0%]
Thermal Shock	[<1.0%]	[<1.5%]
Temperature Cycle (-55C to 125C, 1000hrs.)	[<0.5%]	[<1.0%]
High Temperature Exposure (125C, 1000hrs.)	[<1.0%]	[<1.75%]
Mechanical Shock	[<0.5%]	[<1.0%]
Vibration	[<0.5%]	[<1.0%]
Soldering Heat	[<0.5%]	[<1.0%]
Solderability	[Meets J-STD-002]	[Meets J-STD-002]
Load Life (1000hrs, 70C)	[<0.5%]	[<1.0%]

1ORDERING PROCEDURE EXAMPLE

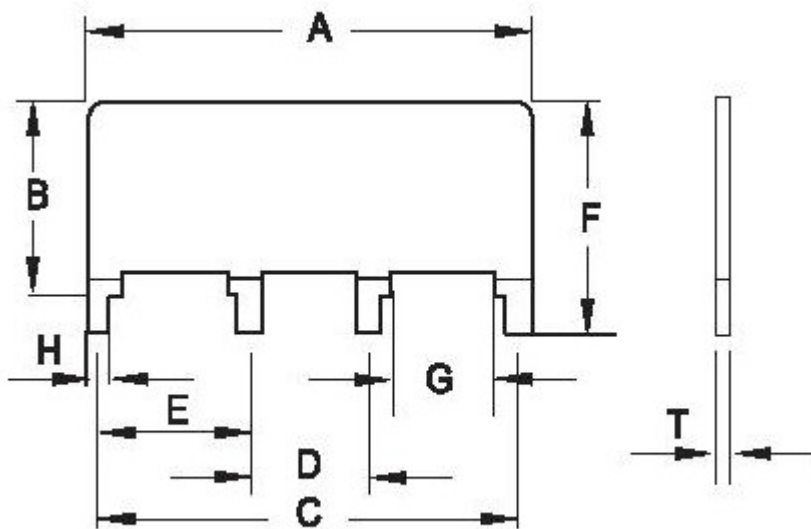


DIMENSIONS

Type	A	B	C	D	E	F	G	H	T \pm 0.05
BWT-2	15.6 +/-0.10	14.0 +/-0.10	13.6 +/-0.05	4.0 +/-0.05	1.2 +/-0.05	17.0 +/-0.10	/	/	0.32
BWT-4	22.0 +/-0.25	10.8 +/-0.25	20.3 +/-0.13	5.1 +/-0.13	7.6 +/-0.13	14.0 +/-0.25	4.5 +/-0.25	1.57 +/-0.13	0.35 to 1.80



BWT-2



BWT-4