

CS227 HIGH POWER PRECISION TO227 SHUNT RESISTOR



The CS-227 is a metal foil, TO227 resistor designed to give a high current capability. The metal foil element is situated on an insulated heatsink composed of plated copper. This assembly is then mounted into a durable plastic housing and sealed with high temperature epoxy. This product features: Four terminals for precise currents, vibration proof, good insulation, compact size and easy bolt mounting.

GENERERAL SPECIFICATIONS

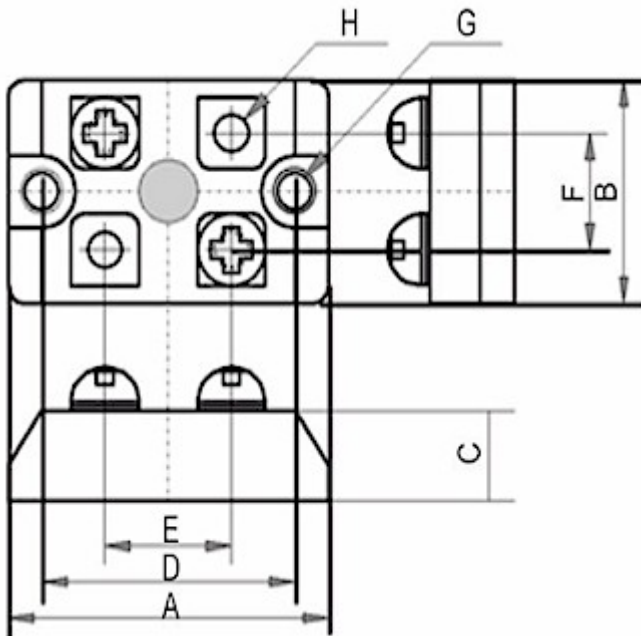
Model	Resistance Range [Ω]	Power Rating [W]	TCR [ppm/C]	Tolerance [%]	Maximum Current
CS227A	1m, 2m, 5m	50	+ -50	+ -5	200A
CS227B	2m+2m, 3m+3m	20 + 20	+ -50	+ -5	80A X 2

CHARACTERISTICS

Values in [] mean change in ohmic value after test

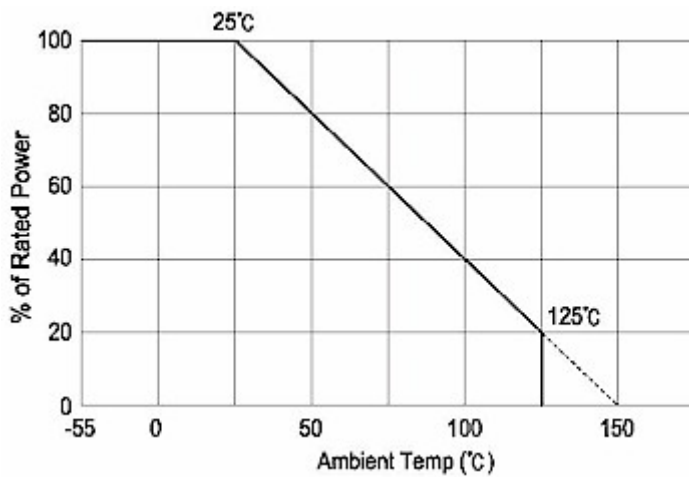
Operating Temp. Range	-55 C to +125 C
Dielectric Withstanding Voltage	2500VDC
Internal Heat Resistance	R < 2.5KW
Inductance	5nH for R < 10mohms
Load Life	Deviation < 5% after 2000 hours

DIMENSIONS

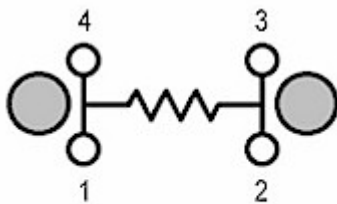


	Dimension [mm]							
	A	B	C	D	E	F	G	H
CS227	38+-0.5	25+-0.5	10+-0.5	30+-0.5	15+-0.5	13+-0.5	2 - 4.2	4 - M4.0

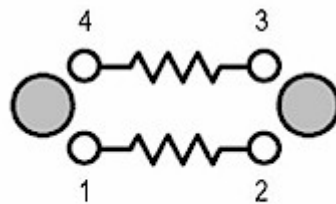
DERATING



CONFIGURATION SCHEMATIC



CS 227A



CS 227B

ORDERING PROCEDURE EXAMPLE

