

RH25C, RH50C METAL CLAD, WIRE WOUND, CEMENT ENCASED RESISTORS



RH25C and RH50C are aluminum housed, metal clad resistors. These models come in standard RH25, 50C or non-inductive RH25, 50 C N windings. The cement molding construction conforms to RoHS guidelines. Construction is completely welded. These models also mount on chassis to utilize heat sink cooling. RH25/50C exhibit high stability at conventional power.

GENERAL SPECIFICATIONS

Model	Element Type	Rated Power		Resistance Range		Temperature coefficient [ppm/C] (-55C,25C,250C)				Resist- ance Tol.	Min Ohmic Value	
		With Heat Sink	In Free Air	Induc- tive	Non- Induc- tive	-15C, 25C, 105C	Measuring Temp. -55, 25C, 250C					
							+200	+ -100	+ -50			+ -30
RH25 C	Wire Wound	20W	8W	.022Ω- 25KΩ	0.1Ω- 10KΩ	+ -200	0.022Ω- 0.09Ω	0.1Ω- 0.976Ω	1Ω- 19.6Ω	20Ω-	+-0.1(B) +- 0.25(C) +-0.5(D) +-1(F) +-2(G) +-5(J)	1Ω- 0.4Ω- 0.2Ω- 0.1Ω- 0.05Ω- 0.02Ω-
RH50 C	Wire wound	30, 50W*	10W	.048Ω- 50KΩ	0.2Ω- 20KΩ	/	0.048Ω- 0.09Ω	0.1Ω- 0.976Ω	1Ω- 19.6Ω	20Ω-		
FRH25 C	Thick Film	15W	5W	/	2Ω- 2MΩ	2Ω- 2MΩ	/	/	/	/		
FRH50 C	Thick Film	25W	8W	/	2Ω- 2MΩ	2Ω- 2MΩ	/	/	/	/		

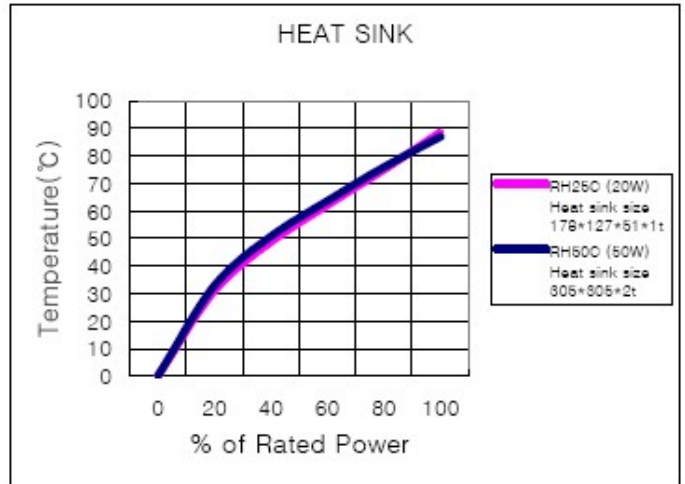
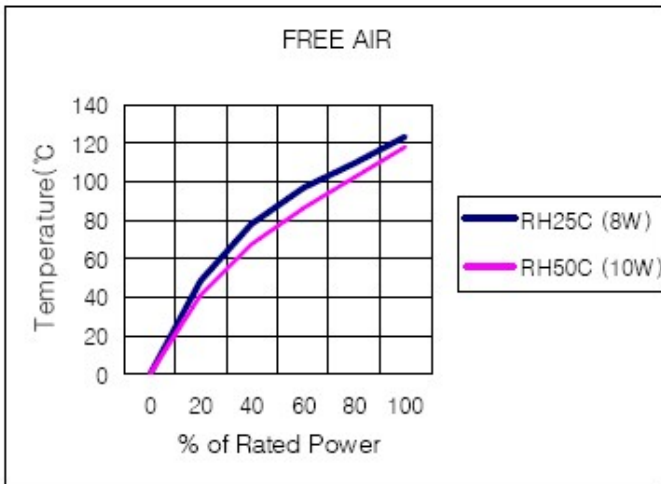
*30W on heat sink size : AL 178 X 127 X 51 X 1t, 50W on heat sink size : AL 305 X 305X X 2t

CHARACTERISTICS

Values in [] mean change in Ω after test

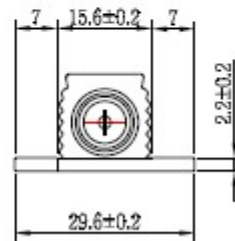
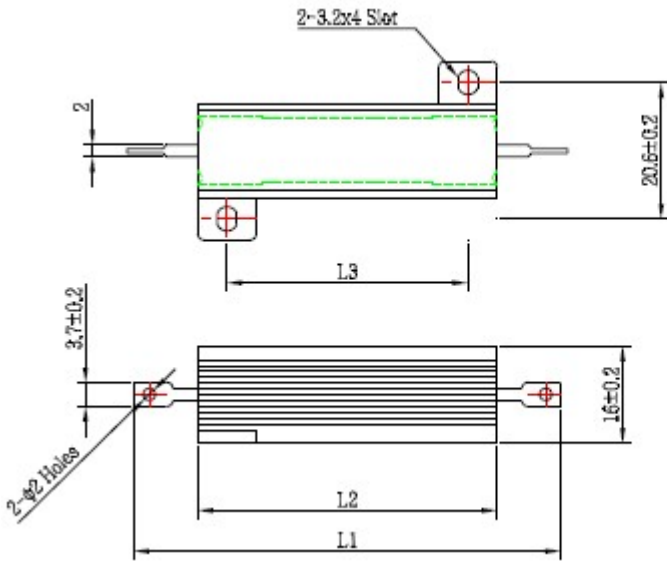
Temperature Range	-55C to 250C
Insulation Resistance	10MΩ minimum (at more than 100Ω)
Dielectric Strength	+-[0.2%+0.05Ω] AC2000V for 1 min, Max leakage current : 2mA
Short Time Overload	+-[0.5%+0.05Ω] Rated power X 5 for 5 secs
Thermal Shock	+-[0.5%+0.05Ω] Power rating 30 min, -55C 15 to 30 min
Moisture Resistance	+-[0.5%+0.05 Ω] 40C, 95% RH, DC100V case to terminal (500hrs.)
Load Life	+-[1%+0.05 Ω] Power rating 90 min on, 30 min off, 1000 hours

SURFACE TEMPERATURE INCREASE VERSUS POWER LOAD

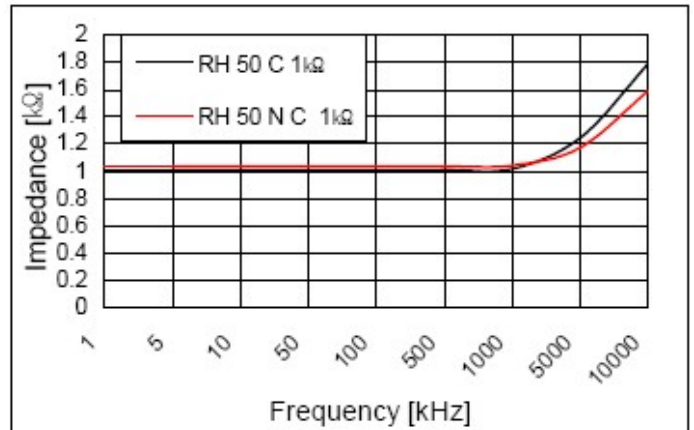
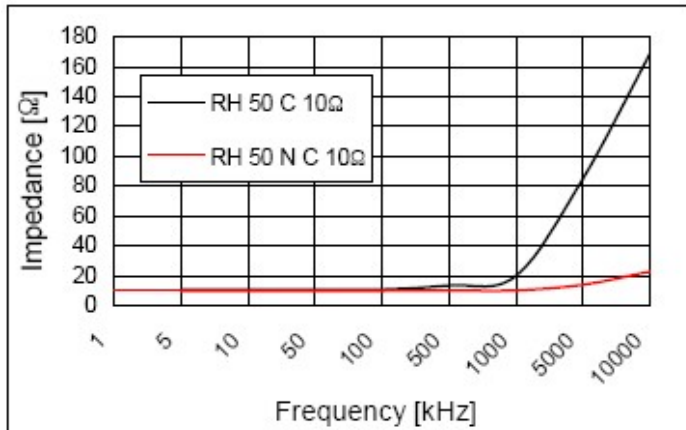


DIMENSIONS

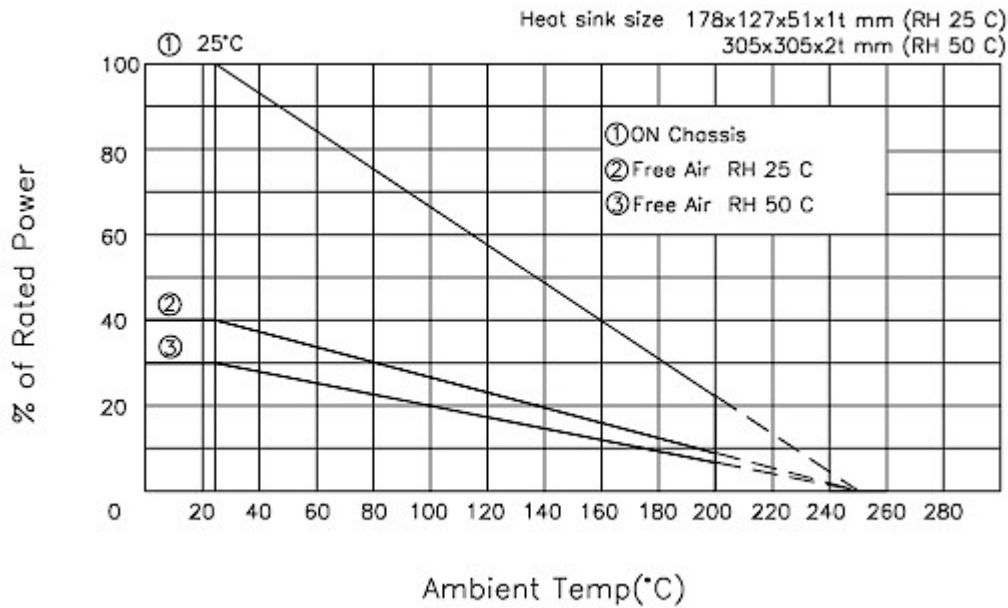
Model	Dimensions(mm)		
	L1	L2	L3
RH 25 C	49.4	27.1	18.3
RHC 50 C	70.8	49.3	39.7



FREQUENCY CHARACTERISTIC CURVES



DERATING CURVE



RHC resistor have an operating temperature range of -55C to 250C
 Derating is required for reduced chassis mounting area and for high ambient temperatures.
 The following curves apply to operation of unmounted resistors.

Heat sink size [mm]:
 178 X 127 X 51 X 1t (RH 25 C)
 305 X 305 X 2 (RH 50 C)

ORDERING PROCEDURE EXAMPLE

