

TPK600/900 CHASSIS MOUNTED NON-INDUCTIVE POWER FILM RESISTORS



INTRODUCTION

These are compact TO227, 600W high power resistors. attachment to an air cooled or water cooled heatsink is necessary. Rated power is 600W (single and dual elements). These units come with M4 screw terminals. They Exhibit very low series inductance, high density installation, vibration proof and the possibility of perfect heat dissipation. Applications include: Snubber resistors for power supplies, gate resistors, pulse generators, high frequency amplifiers, dumping resistors for theatre audio equipment (i.e. Dividing networks for loud speaker systems)

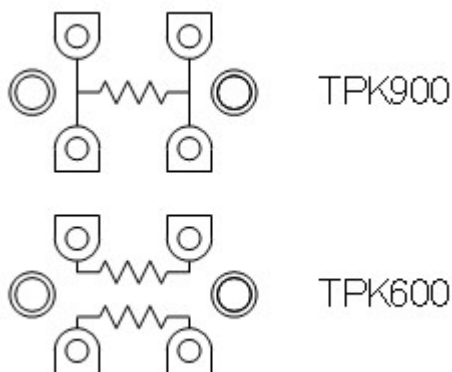
GENERAL SPECIFICATIONS

Item	TPK600	TPK900	Test Conditions
Rated Power	600 Watts	600 Watts	At flange temp. -55C to 25C
Single or Dual	Dual	Single	
Resistance Range	100-1KR	100-1KR	N/A under 100R
Nominal Resistance	Any	Any	Additionally 2.0 and 5.0
TCR	+ -100 ppm/C	+ -100 ppm/C	For -55C to 120C
Tolerance	+ -10%	+ -10%	
Temp. Range	-55 - +120C	-55 - +120C	
Max Applied Voltage	E=Root(PR)		
Withstanding Voltage	2500 VAC		60sec.
Load Life	+-(1.0 %+0.05 ohm)		25C, 90 min. on, 30min. off, 1000 hours.
Humidity	+-(1.0 %+0.05 ohm)		40C, 90-95%RH, DC0.1W, 1000 hours.
Temp. Cycle	+-(1.0 %+0.05 ohm)		-55C, 30Min., +155C 30min., 20 cycles.
Short Time Overload	+-(0.25 %+0.05 ohm)		Note 1
Insulation Resistance	Over 1000 MOhm		Between Terminals and Flange
Vibration	+-(0.25 %+0.05 ohm)		
Weight	30.0g		

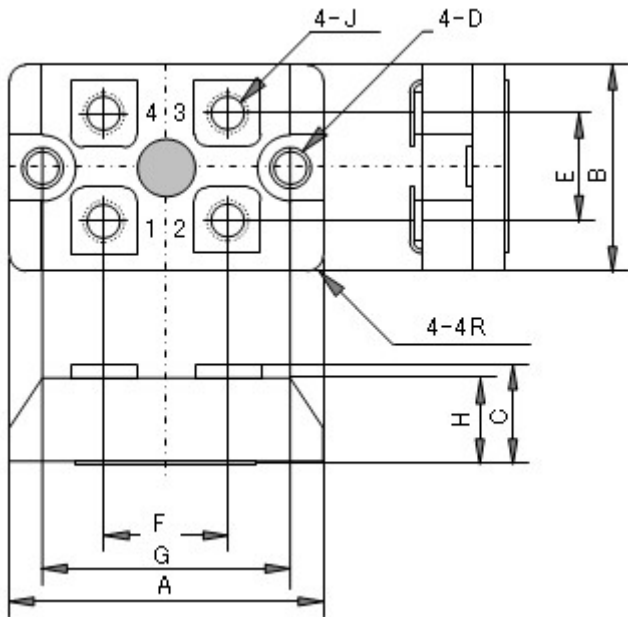
Notes:

1/ Wattage rating X 2.5, 2.5 seconds with heatsink

SCHEMATICS

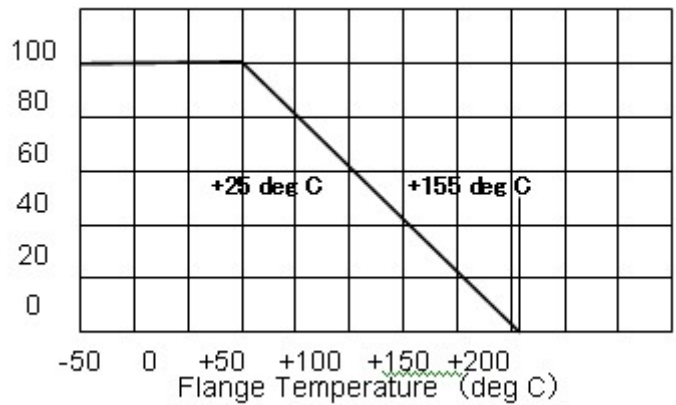
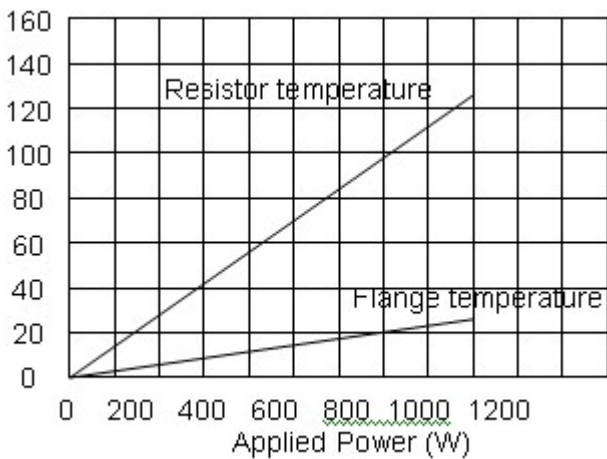


DIMENSIONS



- A 38.0 +/-0.2
- B 25.0 +/-0.2
- C (14.0) +/-0.5
- D 4.2 +/-0.1
- E 13.0 +/-0.3
- F 15.0 +/-0.4
- G 30.0 +/-0.1
- H 12.0 +/-0.2
- J M4

TEMPERATURE RISE AND DERATING CURVES



ORDERING PROCEDURE EXAMPLE

